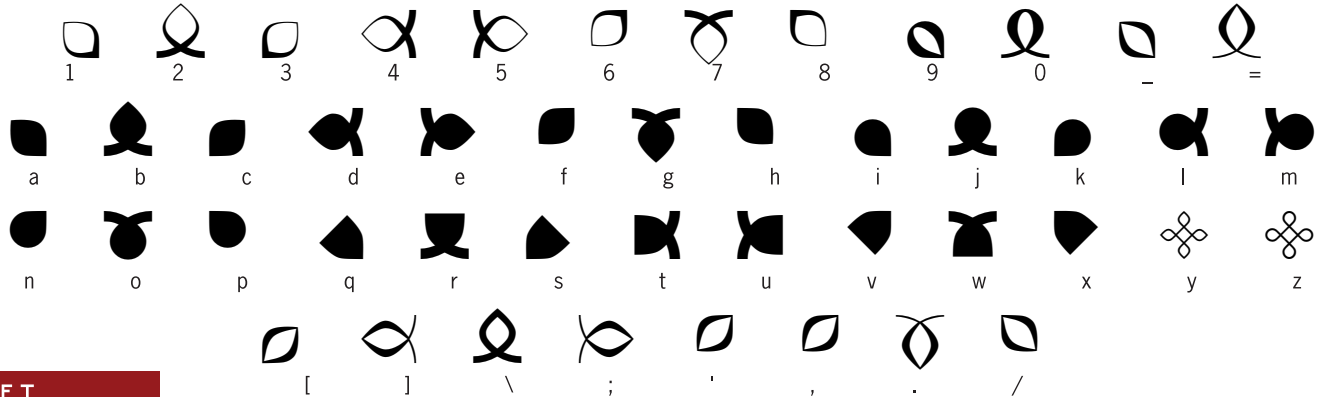
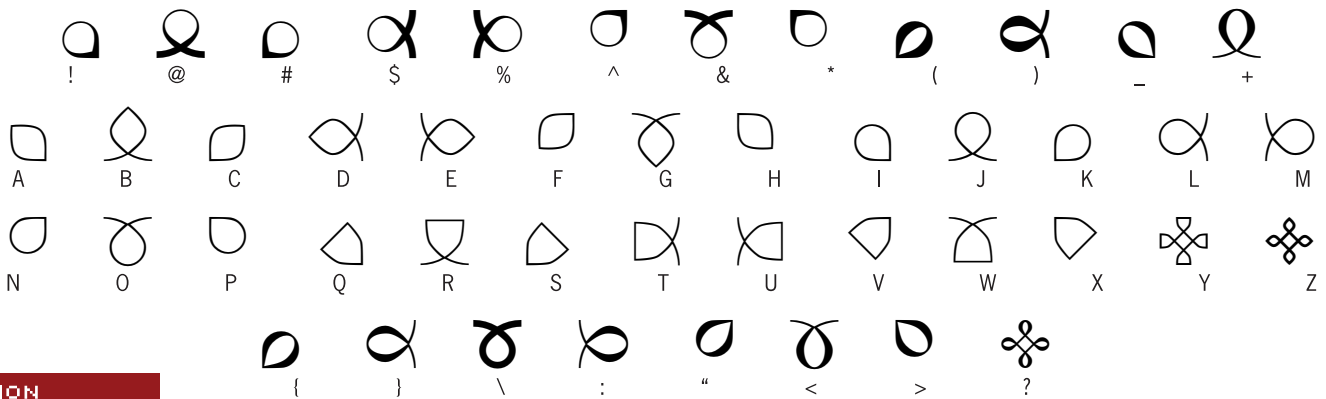


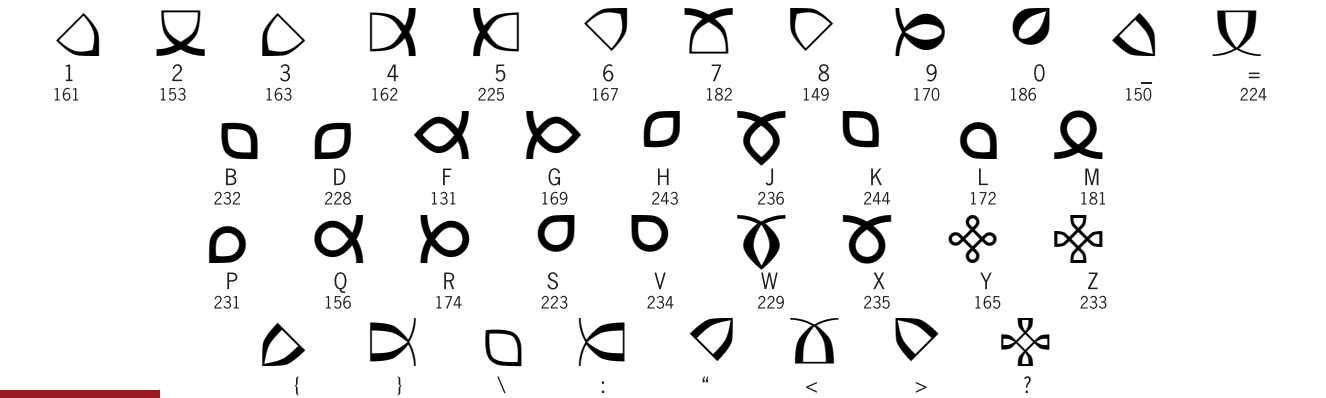
## UNMODIFIED



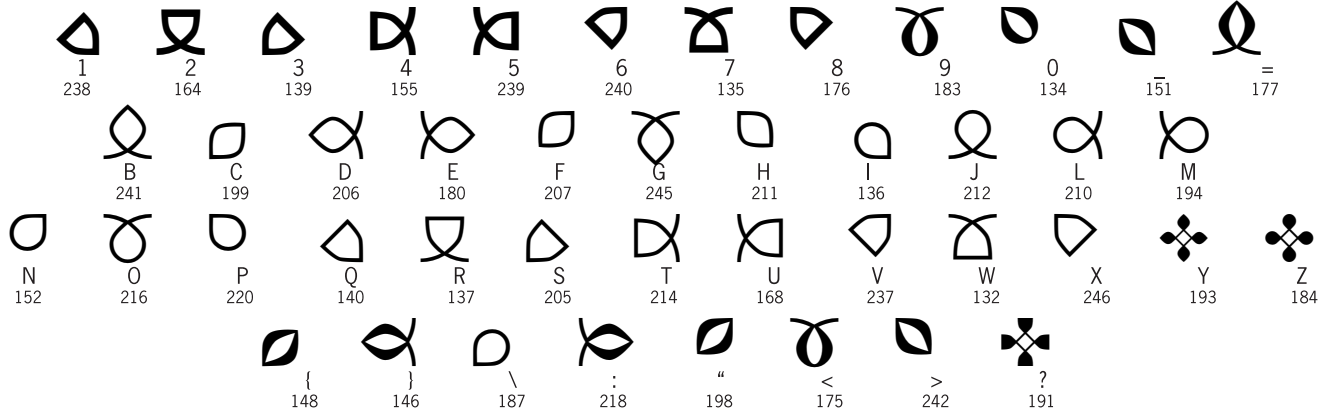
## SHIFT



## OPTION



## OPTION SHIFT



Copyright © Altemus Creative 2002, 2013

Disable automatic symbol and quote mark replacement to use this font. On a Mac, each design can be accessed by typing the character indicated below it, engaging the correct modifier (shift, option or option shift) if necessary. In Windows, for characters in the "Option" and "Option Shift" layers, You must engage the "Num Lock" key, depress the "Alt" key and then type zero plus the three digit Unicode also shown below each design. For instance to access the character at the "Option 1" key position, engage the "Num Lock" key, and on your numerical keypad (not the number keys across the top of the keyboard), press and hold the Alt key while typing 0161. All character designs above are shown at 18 point. **62**



## SAMPLES

14 PT	9PT	6PT
i j		k
n o		p
a b		c
f g		h
q r		s
v w		x
Ol Om		Op
Os Ox		Ov
Ob \		Od
Oh Oj		Ok
OS1 OS2		OS3
OS6 OS7		OS8
OSI OSJ		OS\
OSN OSO		OSP
OSH OS		OSC
OSF OSG		OSH
OSQ OSR		OSS
OSV OSW		OSX
SI SJ		SK
SN SO		SP

14 PT	9PT	6PT;
SA SB		SC
SF SG		SH
SQ SR		SS
SV SW		SX
S1 S2		S3
S6 S7		S8
1 2		3
6 7		8
01 02		03
06 07		08
S- S+		S[
S<		S>
- =		[
, . /		/
0- 0=		]I
0' 0<		0>
9 0		S[
00 OS9		S[
OS- OS=		OS[
OS" OS<		OS>

ALTEMUS / RULES 3 SAMPLE RULES

Copyright © Altemus Creative 2002, 2013

Disable automatic symbol and quote mark replacement to use this font. On a Mac, each design can be accessed by typing the character indicated below it, engaging the correct modifier (shift, option or option shift) if necessary. In Windows, for characters in the "Option" and "Option Shift" layers. You must engage the "Num Lock" key, depress the "Alt" key and then type zero plus the three digit Unicode also shown below each design. For instance to access the character at the "Option 1" key position, engage the "Num Lock" key, and on your numerical keypad (not the number keys across the top of the keyboard), press and hold the Alt key while typing 0161. All character designs above are shown at 18 point. **63**