

*Parfumerie
Script*





DESIGNED BY TYPESENSES

www.typesenses.com

new.myfonts.com/foundry/Typesenses

www.flickr.com/photos/typesenses

www.facebook.com/typesenses

After the success of Aphrodite Slim (One of MyFonts' best fonts of 2009, which was co-designed with Maximiliano Sproviero) Typesenses presents Parfumerie Script, designed by Sabrina Lopez. With more than 2500 glyphs, Parfumerie is unique amongst the others in its style because it is based on the author's calligraphy. One of its variables is a Decorative option which combines Copperplate Calligraphy with an ornamental form native of Buenos Aires (where Sabrina lives), the "Filete Porteño", which makes it look original amongst the other fonts.

Sabrina has exclusively designed this font for two years, with an obsessive adjustment, in order to provide the world with one of the best scripts ever made. With the idea of "Endless way to write a word", lots of glyphs were Open-type programmed so that users can dive into many alternates and ligatures according to their language.

Endless
ways to
write
a word

Parfumerie, as its name reflects, is attractive like a fragrance, delicate, elegant, sophisticated, feminine, sensual, glamorous, ornamental and decorative. It works perfect in the world of perfumes, make up, fashion, weddings, greeting cards, wines, chocolates, romantic novels, magazines, books... It is also versatile enough to be used in any kind of work because the user can choose between a wide range of possibilities:

. STANDARD LIGATURES

. DISCRETIONARY LIGATURES

. REQUIRED LIGATURES

. CONTEXTUAL LIGATURES

. HISTORICAL LIGATURES

. SWASHES

. STYLISTIC ALTERNATES

. TITLING

. CONTEXTUAL ALTERNATES

. HISTORICAL FORMS

. INITIAL FORMS

. TERMINAL FORMS #1 #2 #3

. 19 STYLISTIC SETS

. ORNAMENTS

. 4 OPTIONS OF NUMBERS

. UP TO 20 ALTERNATES PER GLYPH IN THE PRO VERSION.





*Handmade
Process*





Handwritten cursive letter 'A' on a grid background.

Handwritten cursive letter 'A' with a bracket and the number 3, indicating a third stroke or variation.



header-line

baseline

Handwritten cursive letter 'H' repeated three times on a grid background.

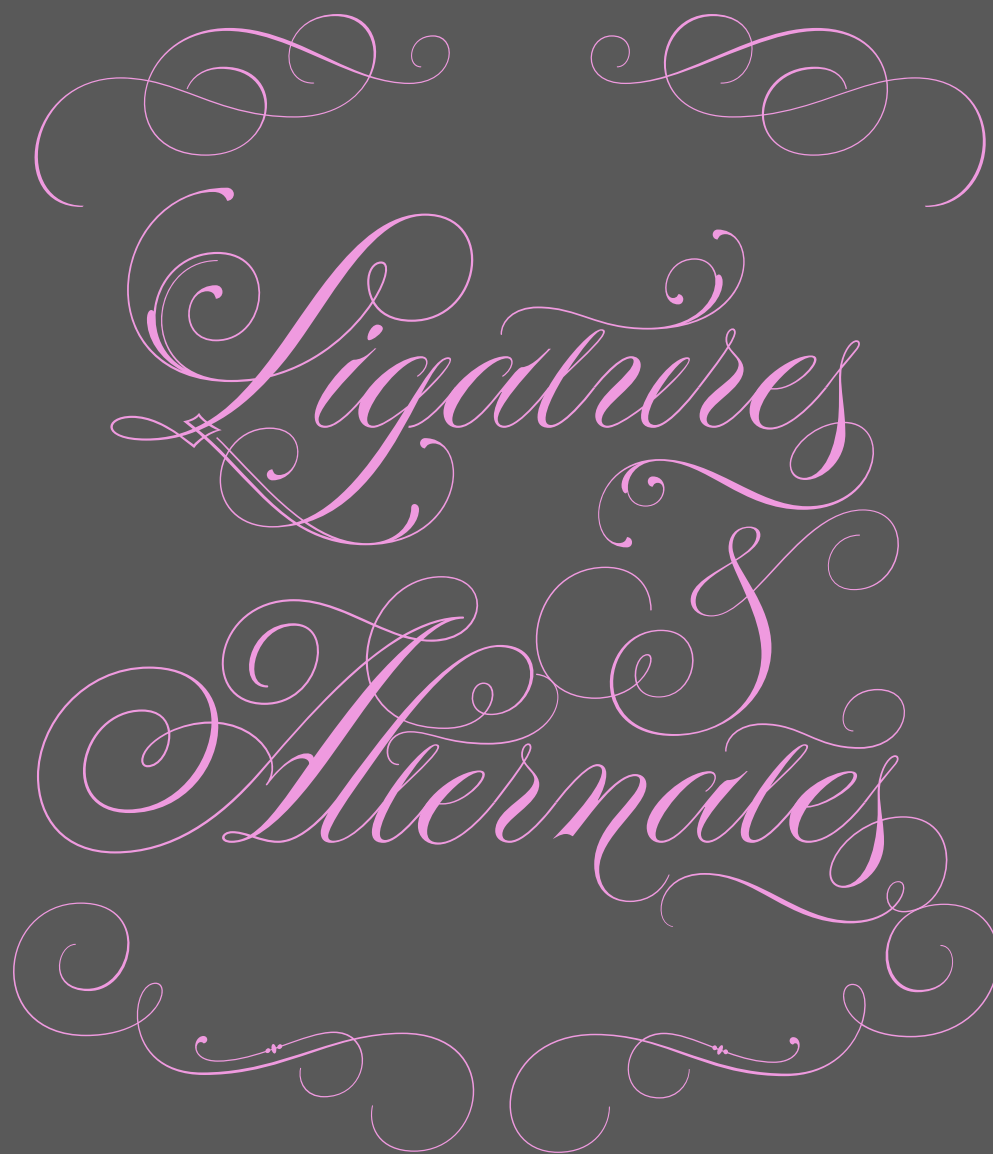


header-line

baseline

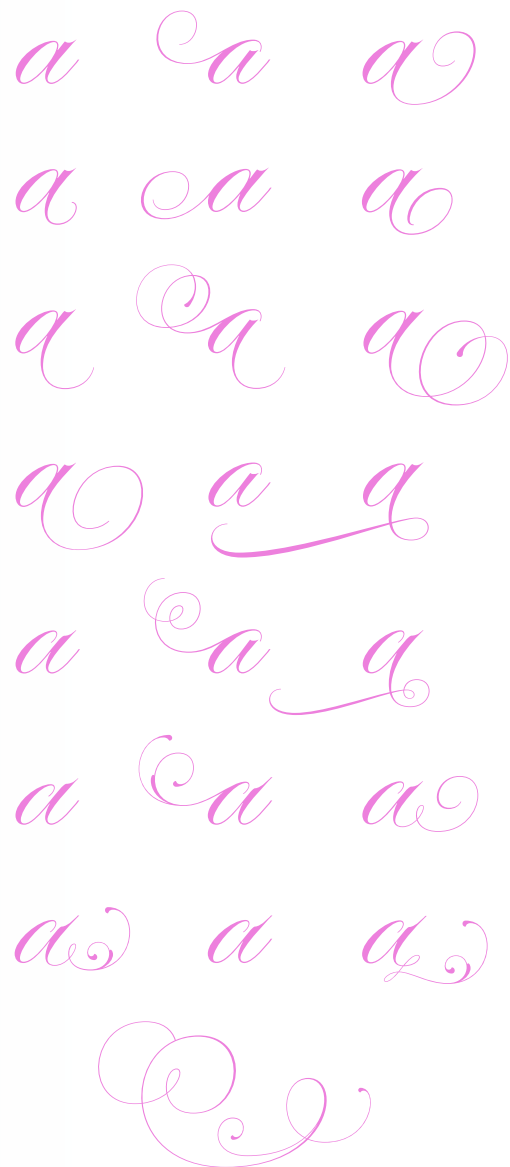
Handwritten cursive letter 'H' repeated two times on a grid background.





*Technical
Information*

Multiple alternates per glyph



I suggest to use the Glyph panel in Adobe Illustrator®,
for example, in order to see all the glyphs.



Sonkella





- *Stylistic Alternates*
- *Titling*
- *Discretionary Ligatures*
- *Stylistic Set 17*
- *Ornaments*

Dame

Lady

Querida

Ragazza

Madame

France

United States

Germany

Italiana

English

Español

Dame
Lady
Querida
Señorita
Madame

France
United States
Germany
Italiano
English
Español

- Stylistic Alternates
- Titling
- Discretionary Ligatures
- Stylistic Set 17
- Stylistic Set 06

- Stylistic Set 13
- Initial Forms
- Stylistic Set 18
- Terminal Forms #3
- Stylistic Set 11

- Swash ● Historical Forms
- Stylistic Set 03
- Standard Ligatures
- Terminal Forms
- Terminal Forms #2

Buenos Aires
Argentina

Buenos Aires
Argentina

- *Stylistic Alternates*
- *Titling*
- *Historical Forms*
- *Stylistic Set 13*
- *Stylistic Set 09*
- *Ornaments*

Examples

Fragrance

Shoes

Lingerie

Happy Birthday

Ring

Underwear

Eyes

Buenos Aires

Woman

Champagne

Pretty

Saint Valentine

Le Cuiro

*Fashion
Teens*

The image features the words "Fashion" and "Teens" in a white, elegant cursive script, stacked vertically. The text is surrounded by intricate white swirls and flourishes that extend across the frame. Several small, four-pointed starburst graphics are scattered around the text, adding a sparkling effect. The entire design is set against a solid, vibrant pink background.

1992
Extra Brut
1987

Wedding

Prêt à Porter

Luxury Hotel

*By
myself*

Sabrina Mc Lopez

