



# TheSansMono Condensed (12 pitch)

other widths available: Mono (10 pitch), SemiCondensed (11 pitch)

- Version 3 - February 2008 - by Luc(as) de Groot
- OpenType format, multi-platform compatible
- Eight weights with italics → 16 fonts
- Small caps, alternates, case-sensitive forms
- TheMixMonoCd™ integrated
- Seven different figures sets
- Western, Central European, Baltic, Turkish, Romanian and more

TheSansMonoCd w2ExtraLight  
*TheSansMonoCd w2ExtraLight Italic*

TheSansMonoCd w3Light  
*TheSansMonoCd w3Light Italic*

TheSansMonoCd w4SemiLight  
*TheSansMonoCd w4SemiLight Italic*

TheSansMonoCd w5Regular  
*TheSansMonoCd w5Regular Italic*

TheSansMonoCd w5SemiBold  
*TheSansMonoCd w5SemiBold Italic*

TheSansMonoCd w6Bold  
*TheSansMonoCd w6Bold Italic*

**TheSansMonoCd w7ExtraBold**  
***TheSansMonoCd w7ExtraBold Italic***

**TheSansMonoCd w8Black**  
***TheSansMonoCd w8Black Italic***



## Samples of weights, styles, small caps

Italics are style-linked in all weights, allowing for shortcuts to be used for activating Italics. The Bold weight is style-linked to the Regular weight.

🗨️ *The weights can easily be changed in the font name field by typing the number of the desired weight: W2, W3, W4, etc. [W5 Regular]*

**Mille gracias por los teston! 50 años porrebero ser un poquito**

↩ W9 Black

*poquiño, ma esta bien de dir, que 150 años un poquito troppiño es.*

↩ W4 SemiLight

**Nos otros potremos estabilir la lungheza que Don Juan tiene per la mejor, jo soi un**

↩ W8 ExtraBold

*pobre hombre disletterato y non tengo cognitiona alcuna de la matematica araba y soi*

↩ W3 Light

↩ W4 SemiLight / W7 Bold / W2 ExtraLight

Possibilissimo, non ci siamo ANCORA sentiti, scritti, visti, toccati, ANNUSATI, pesati e nemmeno parlati (che notoriamente, essendo IL VERBO intransitivo, non potrà mai accadere, anche se molti pensano che funzioni benissimo..). **STIAMO TUTTI BENE**, meno me MEDESIMO che seppur malato pure mi sento già meglio e non vedo l'ora di riprendere a BALLARE. E tu? Che combinasti?

↓ W3 Light / W6 Semibold / W2 ExtraLight / W8 ExtraBold

TYPEFACES are a bit like actors. They have a face and a voice of their own, yet the way in which we perceive them depends greatly on the way they are used: THEIR CONTEXT, their mise-en-scène, the text they are given to embody. Although neither typefaces nor actors can be said to be empty containers, much of their effect depends on the vision of their 'user': THE DIRECTOR respectively the art director (or graphic designer). As soon as a typeface is released into the world, its ORIGINAL DESIGNER has little say in what happens to it: it becomes a character in someone else's play. J.M.

↩ W9 Black

**“Tak, du gode Sjæl!” sagde hun til Maren, “Alt vil jeg ogsaa sige Dig, NAAR DRENGEN sover! Jeg troer allerede, han gjør det! HVOR SØD OG VELSIGNET seer han ud! Med de lukkede Øine! Han veed ikke, hvorledes hans Moder har det.**



## Alternates and special glyphs

- Please note that Stylistic sets are available only in [InDesign CS2](#) or further, and in [Mac OS X applications](#). In other applications it's often possible to manually insert the alternates through the Glyph panel.

### → Capital Alternates, Stylistic Set 3

Activates the alternate capital G with horizontal bar. Also applies to all G variants with diacritics and small caps.

G → G Ĝ Ğ Ġ ġ  
G → G Ĝ Ğ Ġ ġ  
Q → Q  
Q → Q

### → Lowercase Alternates, Stylistic Set 4

Activates the alternate one-eyed lowercase g (also applies to all g variants with diacritics) as well as an alternate 'schoolbook' y, which has a "Mix" form as well (see page 4 for TheMixMono).

g → g ĝ ğ ģ ĵ  
y → y ÿ ŷ ŷ̂ ŷ̃  
y → y ÿ ŷ ŷ̂ ŷ̃

### → Miscellaneous, Stylistic Set 5

Activates an alternate @-sign.

@ → @

### → Arrows, Stylistic Set 6

Activates a set of arrows in eight directions, easy to control with the numeric pad of your keyboard.

7 8 9 → ↖ ↑ ↗  
4 6 → ← →  
1 2 3 → ↙ ↓ ↘



## More OpenType features

### Case-sensitive Forms

This function changes punctuation signs, figures and mathematical operators to their capital-height form. Signs such as =, +, ×, « » and [ ] are positioned slightly higher.

All apps, except *Adobe Illustrator* All Caps

Mac OS X apps Case-Sensitive Layout (on)

(abj)] → (ABJ)]  
«e>h•p•d → «E>H•P•D  
{3×7#5} → {3×7#5}  
19>n÷2∞ → 19>N÷2∞

### Slashed Zero

Activates the slashed zero for each figure set.

All apps Slashed Zero feature

*Adobe Illustrator* manual selection in the Glyph panel only.

000 → 000  
00 → 00

### Discretionary Ligatures

This feature will activate narrow fi and fl ligatures. Note that in standard mode fi and fl will not form ligatures and take up two positions. The discretionary ligatures occupy one position only. Additionally, Stylistic Set 4 activates an alternate one-position fi ligature.

All apps Discretionary Ligatures

fi fl → fi fl  
fi → fi

### Historical Forms

All apps manual selection in the Glyph panel.

s → f

### Ordinals

All apps Ordinals

1a 3o → 1<sup>a</sup> 3<sup>o</sup>

**LF TheMixMonoCd integrated**

All apps activate the swash feature  
InDesign CS2 and above Stylistic Set 1

Tiparo estas aro da tipoj (kutime la alfabeto plus iom), kiuj havas komunan stilon kaj aspektotrajtojn. Por presi tekston aŭ montri ĝin sur komputila ekrano, necesas elekti, kiun tiparon uzi. La tiparo diktas tion, kiel la literoj aspektas. Por montri Esperanto-tekstojn oni kutime elektas Unikodan **tiparon aŭ tiparon, kiu kovras la familion latino 3 de latinidaj literoj. Tiparoj estas artaj verkoj; ilian uzon regas aŭtoraj rajtoj. Kelkaj tiparoj** estas eksplicite senkoste uzeblaj kaj tial multe uzataj. Aliaj estas disdonataj kun komputilaj mastrumaj sistemoj kaj tial almenaŭ ŝajne ne kostas. Konata

TheMixMonoCd ExtraLight  
*TheMixMonoCd ExtraLight Italic*  
TheMixMonoCd Light  
*TheMixMonoCd Light Italic*  
TheMixMonoCd SemiLight  
*TheMixMonoCd SemiLight Italic*  
TheMixMonoCd Regular  
*TheMixMonoCd Regular Italic*  
TheMixMonoCd SemiBold  
*TheMixMonoCd SemiBold Italic*  
TheMixMonoCd Bold  
*TheMixMonoCd Bold Italic*  
TheMixMonoCd ExtraBold  
*TheMixMonoCd ExtraBold Italic*  
TheMixMonoCd Black  
*TheMixMonoCd Black Italic*



**Figure sets** (OpenType features)

**Tabular oldstyle/hanging figures with moderate extenders.**

Default Figures

Hagb 13627€

00123456789 €\$¢£f¥#

**Alternate set of tabular oldstyle/hanging figures with classic proportions.**

Lower x-height (fits well with small caps)

[Adobe applications](#) Tabular Oldstyle

[Adobe InDesign CS2 and above](#) Stylistic set 2

[QuarkXPress 7](#) Oldstyle Figures

Hagb 13627€

00123456789 €\$¢£f¥#

**Tabular lining figures, below cap height.**

[Adobe applications](#) Tabular Lining

[QuarkXPress 7](#) Lining Figures

Hagb 13627€

00123456789 €\$¢£f¥#

**Tabular lining figures, capital height.**

[Adobe applications](#) Proportional Lining\*; Proportional Oldstyle\*; All Caps

[QuarkXPress 7](#) Proportional Figures\*

\* As a monospaced font has no proportional glyphs, this position is used to access additional tabular figures.

Hagb 13627€

00123456789 €\$¢£f¥#

**Smaller lining figures.**

[All apps](#) Small Caps; All Small Caps

HAGB 13627€

00123456789 €\$¢£f¥#

**Superiors.**

[All apps](#) Superscript/Superior

H<sup>0</sup>1234<sub>xp</sub>56789

**Inferiors.**

[All apps](#) Subscript/Inferior

H<sub>0</sub>1234Xp56789



Character Set

UPPERCASE A À Á Â Ã Ä Å Æ B C Č Ć Ć Ç D Ď Đ Ð E È É Ê Ë Ì Í Î Ï J Ĵ K Ł Ł' Ł Ł̣ L M N Ñ Ṇ̃ Ñ̇ Ñ̈ Ñ̉ Ñ̊ Ñ̋ Ñ̌ Ñ̍ Ñ̎ Ñ̏ Ñ̐ Ñ̑ Ñ̒ Ñ̓ Ñ̔ Ñ̕ Ñ̖ Ñ̗ Ñ̘ Ñ̙ Ñ̚ Ñ̛ Ñ̜ Ñ̝ Ñ̞ Ñ̟ Ñ̠ Ñ̡ Ñ̢ Ṇ̃ Ñ̤ Ñ̥ Ñ̦ Ņ̃ Ñ̨ Ñ̩ Ñ̪ Ñ̫ Ñ̬ Ṋ̃ Ñ̮ Ñ̯ Ñ̰ Ṉ̃ Ñ̲ Ñ̳ Ñ̴ Ñ̵ Ñ̶ Ñ̷ Ñ̸ Ñ̹ Ñ̺ Ñ̻ Ñ̼ Ñ̽ Ñ̾ Ñ̿ Ñ̺ Ñ̻ Ñ̼ Ñ̽ Ñ̾ Ñ̿

SMALLCAPS A À Á Â Ã Ä Å Æ B C Č Ć Ć Ç D Ď Đ Ð E È É Ê Ë Ì Í Î Ï J Ĵ K Ł Ł' Ł Ł̣ L M N Ñ Ṇ̃ Ñ̇ Ñ̈ Ñ̉ Ñ̊ Ñ̋ Ñ̌ Ñ̍ Ñ̎ Ñ̏ Ñ̐ Ñ̑ Ñ̒ Ñ̓ Ñ̔ Ñ̕ Ñ̖ Ñ̗ Ñ̘ Ñ̙ Ñ̚ Ñ̛ Ñ̜ Ñ̝ Ñ̞ Ñ̟ Ñ̠ Ñ̡ Ñ̢ Ṇ̃ Ñ̤ Ñ̥ Ñ̦ Ņ̃ Ñ̨ Ñ̩ Ñ̪ Ñ̫ Ñ̬ Ṋ̃ Ñ̮ Ñ̯ Ñ̰ Ṉ̃ Ñ̲ Ñ̳ Ñ̴ Ñ̵ Ñ̶ Ñ̷ Ñ̸ Ñ̹ Ñ̺ Ñ̻ Ñ̼ Ñ̽ Ñ̾ Ñ̿

LOWERCASE a à á â ã ä å æ b c č ć ĉ ç d đ ð e è é ê ë ì í î ï j ĵ k ł ł' ł̣ l m n ñ ṇ̃ ñ̇ ñ̈ ñ̉ ñ̊ ñ̋ ñ̌ ñ̍ ñ̎ ñ̏ ñ̐ ñ̑ ñ̒ ñ̓ ñ̔ ñ̕ ñ̖ ñ̗ ñ̘ ñ̙ ñ̚ ñ̛ ñ̜ ñ̝ ñ̞ ñ̟ ñ̠ ñ̡ ñ̢ ṇ̃ ñ̤ ñ̥ ñ̦ ņ̃ ñ̨ ñ̩ ñ̪ ñ̫ ñ̬ ṋ̃ ñ̮ ñ̯ ñ̰ ṉ̃ ñ̲ ñ̳ ñ̴ ñ̵ ñ̶ ñ̷ ñ̸ ñ̹ ñ̺ ñ̻ ñ̼ ñ̽ ñ̾ ñ̿

OTHER ã ä å æ b c ç d đ ð e è é ê ë ì í î ï j ĵ k ł ł' ł̣ l m n ñ ṇ̃ ñ̇ ñ̈ ñ̉ ñ̊ ñ̋ ñ̌ ñ̍ ñ̎ ñ̏ ñ̐ ñ̑ ñ̒ ñ̓ ñ̔ ñ̕ ñ̖ ñ̗ ñ̘ ñ̙ ñ̚ ñ̛ ñ̜ ñ̝ ñ̞ ñ̟ ñ̠ ñ̡ ñ̢ ṇ̃ ñ̤ ñ̥ ñ̦ ņ̃ ñ̨ ñ̩ ñ̪ ñ̫ ñ̬ ṋ̃ ñ̮ ñ̯ ñ̰ ṉ̃ ñ̲ ñ̳ ñ̴ ñ̵ ñ̶ ñ̷ ñ̸ ñ̹ ñ̺ ñ̻ ñ̼ ñ̽ ñ̾ ñ̿

Supported Languages:

Table with 5 columns listing supported languages: Afrikaans, Albanian, Aragonese, Aromanian, Asturian, Aymara, Belarusian, Breton, Cape Verdean Creole, Catalan, Chamorro, Cheyenne, Corsican, Czech, Danish, Delaware, Dutch, English, Esperanto, Estonian, Faeroese, Finnish, French, Frisian, Friulian, Gagauz, Galician, German, Haitian Creole, Hawaiian, Hungarian, Icelandic, Indonesian, Irish, Italian, Karakalpak, Kashubian, Kazakh, Kumyk, Kurdish, Ladin, Latin, Latvian, Lithuanian, Luxembourgish, Malagasy, Maltese, Maori, Moldavian, Nahuatl, Norwegian, Occitan, Polish, Portuguese, Quechua, Rhaeto-Romance, Romanian, Sami, Lule, Ume, Inari, Manx Gaelic, Scots Gaelic, Silesian, Slovak, Slovenian, Sorbian, Sotho, Spanish, Swahili, Swedish, Tatar, Tetum, Tswana, Turkish, Turkmen, Uyghur, Venetian, Veps, Viro, Votic, Walloon, Welsh, Wolof, Zazaki, Zuni.



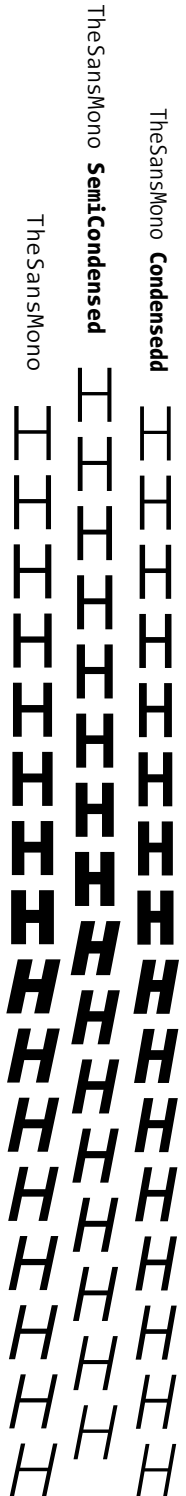
### The three widths of TheSansMono OpenType series

↓ Three widths in eight weights

**10 pitch TheSansMono**,  
traditional typewriter width

**11 pitch TheSansMonoSemiCondensed**,  
close to normal text width

**12 pitch TheSansMonoCondensed**,  
Condensed width



## pitch10

Pitch, the property of  
*Pitch, the property of*

Pitch, the property of  
*Pitch, the property of*

Pitch, the property of  
*Pitch, the property of*

Pitch, the property of  
*Pitch, the property of*

Pitch, the property of  
*Pitch, the property of*

Pitch, the property of  
*Pitch, the property of*

Pitch, the property of  
*Pitch, the property of*

Pitch, the property of  
*Pitch, the property of*

## pitch11

a monospaced font measured  
*a monospaced font measured*

a monospaced font measured  
*a monospaced font measured*

a monospaced font measured  
*a monospaced font measured*

a monospaced font measured  
*a monospaced font measured*

a monospaced font measured  
*a monospaced font measured*

a monospaced font measured  
*a monospaced font measured*

a monospaced font measured  
*a monospaced font measured*

a monospaced font measured  
*a monospaced font measured*

## pitch12

by its perceived width **Extralight**  
*by its perceived width*

by its perceived width **Light**  
*by its perceived width*

by its perceived width **Semilight**  
*by its perceived width*

by its perceived width **Regular**  
*by its perceived width*

by its perceived width **SemiBold**  
*by its perceived width*

by its perceived width **Bold**  
*by its perceived width*

by its perceived width **Extrabold**  
*by its perceived width*

by its perceived width **Black**  
*by its perceived width*

