

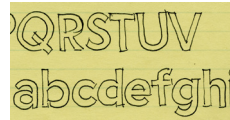
THE STORY OF Proxima Vara

Named Styles

- Proxima Vara Thin
- Proxima Vara Thin Italic*
- Proxima Vara Extralight
- Proxima Vara Extralight Italic*
- Proxima Vara Light
- Proxima Vara Light Italic*
- Proxima Vara Regular
- Proxima Vara Regular Italic*
- Proxima Vara Medium
- Proxima Vara Medium Italic*
- Proxima Vara Semibold
- Proxima Vara Semibold Italic*
- Proxima Vara Bold**
- Proxima Vara Bold Italic***
- Proxima Vara Extrabold**
- Proxima Vara Extrabold Italic***
- Proxima Vara Black**
- Proxima Vara Black Italic***
- Proxima Vara Condensed Thin
- Proxima Vara Condensed Thin Italic*
- Proxima Vara Condensed Extralight
- Proxima Vara Condensed Extralight Italic*
- Proxima Vara Condensed Light
- Proxima Vara Condensed Light Italic*
- Proxima Vara Condensed Regular
- Proxima Vara Condensed Regular Italic*
- Proxima Vara Condensed Medium
- Proxima Vara Condensed Medium Italic*
- Proxima Vara Condensed Semibold
- Proxima Vara Condensed Semibold Italic*
- Proxima Vara Condensed Bold**
- Proxima Vara Condensed Bold Italic***
- Proxima Vara Condensed Extrabold**
- Proxima Vara Condensed Extrabold Italic***
- Proxima Vara Condensed Black**
- Proxima Vara Condensed Black Italic***
- Proxima Vara Extra Condensed Thin
- Proxima Vara Extra Condensed Thin Italic*
- Proxima Vara Extra Condensed Extralight
- Proxima Vara Extra Condensed Extralight Italic*
- Proxima Vara Extra Condensed Light
- Proxima Vara Extra Condensed Light Italic*
- Proxima Vara Extra Condensed Regular
- Proxima Vara Extra Condensed Regular Italic*
- Proxima Vara Extra Condensed Medium
- Proxima Vara Extra Condensed Medium Italic*
- Proxima Vara Extra Condensed Semibold
- Proxima Vara Extra Condensed Semibold Italic*
- Proxima Vara Extra Condensed Bold**
- Proxima Vara Extra Condensed Bold Italic***
- Proxima Vara Extra Condensed Extrabold**
- Proxima Vara Extra Condensed Extrabold Italic***
- Proxima Vara Extra Condensed Black**
- Proxima Vara Extra Condensed Black Italic***

PROXIMA VARA is the variable version of Proxima Nova. It is a typeface idea I've been working on in various forms since 1981. It was nothing more than rough sketches back then, but the concept for the lowercase was quite similar to how it eventually turned out. The caps came later.

◆ In 1991, I was art director of *Business Ethics* magazine, where I was using Gill Sans. I liked it, but wished for something a bit plainer and more modern that still had a geometric feel. Such a face did not seem to exist. Starting from



PROXIMA SKETCH, C. 1981.

my 1981 idea, I began working on a new typeface to fill this void. I modeled it somewhat on American “gothic” faces. ► I wanted the general proportions and stroke contrast of Helvetica or Akzidenz Grotesk, but with construction and details borrowed variously from Futura, Kabel, the ATF gothics (Copperplate Gothic, News Gothic, Franklin Gothic, etc.) and the U.S. Federal Highway signage typeface. The result was a hybrid; a face combining modern, even-width proportions with a somewhat geometric appearance. ★ I released it through FontHaus in 1994 as **Proxima Sans**, a family of six fonts—Regular, Medium, and Black with matching italics. ● I had plans to do more weights, small caps, a condensed version, and other ideas. But between lackluster sales, becoming a new parent, and taking on a new full-time job, I found I didn't have the time or energy to continue working on it for a while. ► By the early

Proxima Sans

PROXIMA SANS, 1994.

Proxima Nova

PROXIMA NOVA, 2005.

In 2005, I re-released it as **Proxima Nova**, a family of 42 fonts—seven weights and three widths with matching italics. Built from the start with the OpenType format in mind, it featured advanced typographic features like small caps, different figure styles, fractions, and alternate characters, enough to take on the most demanding typographic applications. ● Proxima Nova contained other improvements over the original. I reviewed and refined every character. I rebuilt the italics from scratch. I redid the hinting for better on-screen display. The character set grew from 245 to 699 characters (1432 with the latest version). I kept the special characters from the original, like the arrows and other dingbats. I scrapped and rebuilt the spacing and kerning. As in Proxima Sans, the italics have been optically adjusted to eliminate the distortion caused by simply slanting the letters—true italics, not simple obliques. ► Since I first released Proxima Nova, I've continued to make improvements and enhancements, such as additional language support, including Vietnamese, Cyrillic and Greek, and have added a new weight—Medium—bringing the total number of fonts in the family to 48. ★ **Proxima Vara** continues this evolution, adding OpenType Font Variations (OTVar). This new family puts all the styles and features of Proxima Nova in a single font file. The original styles exist as “named” styles (plus a new weight—Extralight) which you can select from font menus. But in apps and web browsers that support variable fonts, you can select any arbitrary weight, width, or slant using sliders or specifying values, giving Proxima Vara 5,000,000 possible styles. —Mark Simonson

Features

CASE-SENSITIVE CHARACTERS

(x-ray) → (X-RAY)

TRUE SMALL CAPS

TRUE SMALL CAPS

LINING & OLD STYLE FIGURES

1234567890 \$¢€£¥

1234567890 £¢€£¥

PROPORTIONAL AND TABULAR FIGURES

12345 → 12345

12345 → 12345

FRACTION SUPPORT

2/3, 1/8, 53/72...

→ ⅔ ⅛, 53/72...

ORDINAL SUPPORT

1st, 2nd, 3rd, 4th...

→ 1st, 2nd, 3rd, 4th...

ALTERNATE CHARACTERS

Gladly → Gladly

01 → 01

LIGATURES

ff fi ffi fl ffl fb fh fj ffj fk

DINGBATS

→ ← ↑ ↓ ↗ ↘ ↙ ↘ ▲ ▼ ★ ◆ ◻ ◻ ✓ ✂

EXTENDED LANGUAGE SUPPORT

ĐPŸĂĈĐĚŃĠĤŁŚΣΔ...

ĐPŸĂĈĐĚŃĠĤŁŚ...

đpŷăĉďěňġhıķłśtũσδ...

EXTENDED CURRENCY SUPPORT

\$¢€£¥ƒƒ₣₤₧₨₩₪₫€₭₮₯

đñwᵛᵛᵛ

Proxima Vara Display Sample Summary (Named Styles)

PROXIMA VARA THIN

1957 SPUTNIK 1958 EXPLORER 1961 VOSTOK 1962 MERCURY 1
1. MERCURY 2. VENUS 3. EARTH 4. MARS 5. JUPITER 6. SATURN 7.
Vexed Buzz quietly watched Neil jumping to mark the surface o

PROXIMA VARA EXTRA LIGHT

1957 SPUTNIK 1958 EXPLORER 1961 VOSTOK 1962 MERCURY
1. MERCURY 2. VENUS 3. EARTH 4. MARS 5. JUPITER 6. SATURN 7
Vexed Buzz quietly watched Neil jumping to mark the surface o

PROXIMA VARA LIGHT

1957 SPUTNIK 1958 EXPLORER 1961 VOSTOK 1962 MERCURY
1. MERCURY 2. VENUS 3. EARTH 4. MARS 5. JUPITER 6. SATURN
Vexed Buzz quietly watched Neil jumping to mark the surface

PROXIMA VARA REGULAR

1957 SPUTNIK 1958 EXPLORER 1961 VOSTOK 1962 MERCUR
1. MERCURY 2. VENUS 3. EARTH 4. MARS 5. JUPITER 6. SATURN
Vexed Buzz quietly watched Neil jumping to mark the surface

PROXIMA VARA MEDIUM

1957 SPUTNIK 1958 EXPLORER 1961 VOSTOK 1962 MERCU
1. MERCURY 2. VENUS 3. EARTH 4. MARS 5. JUPITER 6. SATUR
Vexed Buzz quietly watched Neil jumping to mark the surfac

PROXIMA VARA SEMIBOLD

1957 SPUTNIK 1958 EXPLORER 1961 VOSTOK 1962 MERCU
1. MERCURY 2. VENUS 3. EARTH 4. MARS 5. JUPITER 6. SATUR
Vexed Buzz quietly watched Neil jumping to mark the surfac

PROXIMA VARA BOLD

1957 SPUTNIK 1958 EXPLORER 1961 VOSTOK 1962 MERC
1. MERCURY 2. VENUS 3. EARTH 4. MARS 5. JUPITER 6. SATU
Vexed Buzz quietly watched Neil jumping to mark the surfa

PROXIMA VARA EXTRABOLD

1957 SPUTNIK 1958 EXPLORER 1961 VOSTOK 1962 MER
1. MERCURY 2. VENUS 3. EARTH 4. MARS 5. JUPITER 6. SAT
Vexed Buzz quietly watched Neil jumping to mark the surf

PROXIMA VARA BLACK

1957 SPUTNIK 1958 EXPLORER 1961 VOSTOK 1962 MER
1. MERCURY 2. VENUS 3. EARTH 4. MARS 5. JUPITER 6. SA
Vexed Buzz quietly watched Neil jumping to mark the sur

Proxima Vara Display Sample Summary (Named Styles)

PROXIMA VARA THIN ITALIC

1957 SPUTNIK 1958 EXPLORER 1961 VOSTOK 1962 MERCURY 1
1. MERCURY 2. VENUS 3. EARTH 4. MARS 5. JUPITER 6. SATURN. 7.
Vexed Buzz quietly watched Neil jumping to mark the surface o

PROXIMA VARA THIN ITALIC

1957 SPUTNIK 1958 EXPLORER 1961 VOSTOK 1962 MERCURY
1. MERCURY 2. VENUS 3. EARTH 4. MARS 5. JUPITER 6. SATURN 7.
Vexed Buzz quietly watched Neil jumping to mark the surface

PROXIMA VARA LIGHT ITALIC

1957 SPUTNIK 1958 EXPLORER 1961 VOSTOK 1962 MERCURY
1. MERCURY 2. VENUS 3. EARTH 4. MARS 5. JUPITER 6. SATURN 7
Vexed Buzz quietly watched Neil jumping to mark the surface

PROXIMA VARA REGULAR ITALIC

1957 SPUTNIK 1958 EXPLORER 1961 VOSTOK 1962 MERCUR
1. MERCURY 2. VENUS 3. EARTH 4. MARS 5. JUPITER 6. SATURN
Vexed Buzz quietly watched Neil jumping to mark the surfac

PROXIMA VARA MEDIUM ITALIC

1957 SPUTNIK 1958 EXPLORER 1961 VOSTOK 1962 MERCU
1. MERCURY 2. VENUS 3. EARTH 4. MARS 5. JUPITER 6. SATURN
Vexed Buzz quietly watched Neil jumping to mark the surfac

PROXIMA VARA SEMIBOLD ITALIC

1957 SPUTNIK 1958 EXPLORER 1961 VOSTOK 1962 MERCU
1. MERCURY 2. VENUS 3. EARTH 4. MARS 5. JUPITER 6. SATUR
Vexed Buzz quietly watched Neil jumping to mark the surfa

PROXIMA VARA BOLD ITALIC

1957 SPUTNIK 1958 EXPLORER 1961 VOSTOK 1962 MERC
1. MERCURY 2. VENUS 3. EARTH 4. MARS 5. JUPITER 6. SATUR
Vexed Buzz quietly watched Neil jumping to mark the surfa

PROXIMA VARA EXTRABOLD ITALIC

1957 SPUTNIK 1958 EXPLORER 1961 VOSTOK 1962 MER
1. MERCURY 2. VENUS 3. EARTH 4. MARS 5. JUPITER 6. SATU
Vexed Buzz quietly watched Neil jumping to mark the sur

PROXIMA VARA BLACK ITALIC

1957 SPUTNIK 1958 EXPLORER 1961 VOSTOK 1962 MER
1. MERCURY 2. VENUS 3. EARTH 4. MARS 5. JUPITER 6. SAT
Vexed Buzz quietly watched Neil jumping to mark the su

Proxima Vara Display Sample Summary (Named Styles)

PROXIMA VARA CONDENSED THIN

1957 SPUTNIK 1958 EXPLORER 1961 VOSTOK 1962 MERCURY 1964 RANGER 1
1. MERCURY 2. VENUS 3. EARTH 4. MARS 5. JUPITER 6. SATURN 7. URANUS 8. NEP
Vexed Buzz quietly watched Neil jumping to mark the surface. Vexed Buzz qu

PROXIMA VARA CONDENSED THIN

1957 SPUTNIK 1958 EXPLORER 1961 VOSTOK 1962 MERCURY 1964 RANGER
1. MERCURY 2. VENUS 3. EARTH 4. MARS 5. JUPITER 6. SATURN 7. URANUS 8. NE
Vexed Buzz quietly watched Neil jumping to mark the surface. Vexed Buzz q

PROXIMA VARA CONDENSED LIGHT

1957 SPUTNIK 1958 EXPLORER 1961 VOSTOK 1962 MERCURY 1964 RANGER
1. MERCURY 2. VENUS 3. EARTH 4. MARS 5. JUPITER 6. SATURN 7. URANUS 8. N
Vexed Buzz quietly watched Neil jumping to mark the surface. Vexed Buzz

PROXIMA VARA CONDENSED REGULAR

1957 SPUTNIK 1958 EXPLORER 1961 VOSTOK 1962 MERCURY 1964 RANG
1. MERCURY 2. VENUS 3. EARTH 4. MARS 5. JUPITER 6. SATURN 7. URANUS 8
Vexed Buzz quietly watched Neil jumping to mark the surface. Vexed Bu

PROXIMA VARA CONDENSED MEDIUM

1957 SPUTNIK 1958 EXPLORER 1961 VOSTOK 1962 MERCURY 1964 RAN
1. MERCURY 2. VENUS 3. EARTH 4. MARS 5. JUPITER 6. SATURN 7. URANUS
Vexed Buzz quietly watched Neil jumping to mark the surface. Vexed B

PROXIMA VARA CONDENSED SEMIBOLD

1957 SPUTNIK 1958 EXPLORER 1961 VOSTOK 1962 MERCURY 1964 RA
1. MERCURY 2. VENUS 3. EARTH 4. MARS 5. JUPITER 6. SATURN 7. URANU
Vexed Buzz quietly watched Neil jumping to mark the surface. Vexed B

PROXIMA VARA CONDENSED BOLD

1957 SPUTNIK 1958 EXPLORER 1961 VOSTOK 1962 MERCURY 1964
1. MERCURY 2. VENUS 3. EARTH 4. MARS 5. JUPITER 6. SATURN 7. URAN
Vexed Buzz quietly watched Neil jumping to mark the surface. Vexed

PROXIMA VARA CONDENSED EXTRABOLD

1957 SPUTNIK 1958 EXPLORER 1961 VOSTOK 1962 MERCURY 196
1. MERCURY 2. VENUS 3. EARTH 4. MARS 5. JUPITER 6. SATURN 7. UR
Vexed Buzz quietly watched Neil jumping to mark the surface. Vex

PROXIMA VARA CONDENSED BLACK

1957 SPUTNIK 1958 EXPLORER 1961 VOSTOK 1962 MERCURY 19
1. MERCURY 2. VENUS 3. EARTH 4. MARS 5. JUPITER 6. SATURN 7. U
Vexed Buzz quietly watched Neil jumping to mark the surface. Ve

Proxima Vara Display Sample Summary (Named Styles)

PROXIMA VARA CONDENSED THIN ITALIC

1957 SPUTNIK 1958 EXPLORER 1961 VOSTOK 1962 MERCURY 1964 RANGER 1
1. MERCURY 2. VENUS 3. EARTH 4. MARS 5. JUPITER 6. SATURN 7. URANUS 8. NEP
Vexed Buzz quietly watched Neil jumping to mark the surface. Vexed Buzz q

PROXIMA VARA CONDENSED THIN ITALIC

1957 SPUTNIK 1958 EXPLORER 1961 VOSTOK 1962 MERCURY 1964 RANGER
1. MERCURY 2. VENUS 3. EARTH 4. MARS 5. JUPITER 6. SATURN 7. URANUS 8. NE
Vexed Buzz quietly watched Neil jumping to mark the surface. Vexed Buzz

PROXIMA VARA CONDENSED LIGHT ITALIC

1957 SPUTNIK 1958 EXPLORER 1961 VOSTOK 1962 MERCURY 1964 RANGE
1. MERCURY 2. VENUS 3. EARTH 4. MARS 5. JUPITER 6. SATURN 7. URANUS 8. N
Vexed Buzz quietly watched Neil jumping to mark the surface. Vexed Buzz

PROXIMA VARA CONDENSED REGULAR ITALIC

1957 SPUTNIK 1958 EXPLORER 1961 VOSTOK 1962 MERCURY 1964 RANG
1. MERCURY 2. VENUS 3. EARTH 4. MARS 5. JUPITER 6. SATURN 7. URANUS 8.
Vexed Buzz quietly watched Neil jumping to mark the surface. Vexed Bu

PROXIMA VARA CONDENSED MEDIUM ITALIC

1957 SPUTNIK 1958 EXPLORER 1961 VOSTOK 1962 MERCURY 1964 RAN
1. MERCURY 2. VENUS 3. EARTH 4. MARS 5. JUPITER 6. SATURN 7. URANUS
Vexed Buzz quietly watched Neil jumping to mark the surface. Vexed B

PROXIMA VARA CONDENSED SEMIBOLD ITALIC

1957 SPUTNIK 1958 EXPLORER 1961 VOSTOK 1962 MERCURY 1964 RA
1. MERCURY 2. VENUS 3. EARTH 4. MARS 5. JUPITER 6. SATURN 7. URANUS
Vexed Buzz quietly watched Neil jumping to mark the surface. Vexed B

PROXIMA VARA CONDENSED BOLD ITALIC

1957 SPUTNIK 1958 EXPLORER 1961 VOSTOK 1962 MERCURY 1964
1. MERCURY 2. VENUS 3. EARTH 4. MARS 5. JUPITER 6. SATURN 7. URAN
Vexed Buzz quietly watched Neil jumping to mark the surface. Vexed

PROXIMA VARA CONDENSED EXTRABOLD ITALIC

1957 SPUTNIK 1958 EXPLORER 1961 VOSTOK 1962 MERCURY 196
1. MERCURY 2. VENUS 3. EARTH 4. MARS 5. JUPITER 6. SATURN 7. URA
Vexed Buzz quietly watched Neil jumping to mark the surface. Vex

PROXIMA VARA CONDENSED BLACK ITALIC

1957 SPUTNIK 1958 EXPLORER 1961 VOSTOK 1962 MERCURY 1
1. MERCURY 2. VENUS 3. EARTH 4. MARS 5. JUPITER 6. SATURN 7. U
Vexed Buzz quietly watched Neil jumping to mark the surface. V

Proxima Vara Display Sample Summary (Named Styles)

PROXIMA VARA EXTRA CONDENSED THIN

1957 SPUTNIK 1958 EXPLORER 1961 VOSTOK 1962 MERCURY 1964 RANGER 1965 GEMINI 1966 VENERA
1. MERCURY 2. VENUS 3. EARTH 4. MARS 5. JUPITER 6. SATURN 7. URANUS 8. NEPTUNE 9. PLUTO? 1. MERCUR
Vexed Buzz quietly watched Neil jumping to mark the surface. Vexed Buzz quietly watched Neil ju

PROXIMA VARA EXTRA CONDENSED THIN

1957 SPUTNIK 1958 EXPLORER 1961 VOSTOK 1962 MERCURY 1964 RANGER 1965 GEMINI 1966 VEN
1. MERCURY 2. VENUS 3. EARTH 4. MARS 5. JUPITER 6. SATURN 7. URANUS 8. NEPTUNE 9. PLUTO? 1. MERC
Vexed Buzz quietly watched Neil jumping to mark the surface. Vexed Buzz quietly watched Neil

PROXIMA VARA EXTRA CONDENSED LIGHT

1957 SPUTNIK 1958 EXPLORER 1961 VOSTOK 1962 MERCURY 1964 RANGER 1965 GEMINI 1966 V
1. MERCURY 2. VENUS 3. EARTH 4. MARS 5. JUPITER 6. SATURN 7. URANUS 8. NEPTUNE 9. PLUTO? 1. M
Vexed Buzz quietly watched Neil jumping to mark the surface. Vexed Buzz quietly watched N

PROXIMA VARA EXTRA CONDENSED REGULAR

1957 SPUTNIK 1958 EXPLORER 1961 VOSTOK 1962 MERCURY 1964 RANGER 1965 GEMINI 19
1. MERCURY 2. VENUS 3. EARTH 4. MARS 5. JUPITER 6. SATURN 7. URANUS 8. NEPTUNE 9. PLUTO?
Vexed Buzz quietly watched Neil jumping to mark the surface. Vexed Buzz quietly watche

PROXIMA VARA EXTRA CONDENSED MEDIUM

1957 SPUTNIK 1958 EXPLORER 1961 VOSTOK 1962 MERCURY 1964 RANGER 1965 GEMINI
1. MERCURY 2. VENUS 3. EARTH 4. MARS 5. JUPITER 6. SATURN 7. URANUS 8. NEPTUNE 9. PLUT
Vexed Buzz quietly watched Neil jumping to mark the surface. Vexed Buzz quietly watc

PROXIMA VARA EXTRA CONDENSED SEMIBOLD

1957 SPUTNIK 1958 EXPLORER 1961 VOSTOK 1962 MERCURY 1964 RANGER 1965 GEM
1. MERCURY 2. VENUS 3. EARTH 4. MARS 5. JUPITER 6. SATURN 7. URANUS 8. NEPTUNE 9. P
Vexed Buzz quietly watched Neil jumping to mark the surface. Vexed Buzz quietly wa

PROXIMA VARA EXTRA CONDENSED BOLD

1957 SPUTNIK 1958 EXPLORER 1961 VOSTOK 1962 MERCURY 1964 RANGER 1965 G
1. MERCURY 2. VENUS 3. EARTH 4. MARS 5. JUPITER 6. SATURN 7. URANUS 8. NEPTUNE
Vexed Buzz quietly watched Neil jumping to mark the surface. Vexed Buzz quietly

PROXIMA VARA EXTRA CONDENSED EXTRABOLD

1957 SPUTNIK 1958 EXPLORER 1961 VOSTOK 1962 MERCURY 1964 RANGER 19
1. MERCURY 2. VENUS 3. EARTH 4. MARS 5. JUPITER 6. SATURN 7. URANUS 8. NEPTU
Vexed Buzz quietly watched Neil jumping to mark the surface. Vexed Buzz qui

PROXIMA VARA EXTRA CONDENSED BLACK

1957 SPUTNIK 1958 EXPLORER 1961 VOSTOK 1962 MERCURY 1964 RANGE
1. MERCURY 2. VENUS 3. EARTH 4. MARS 5. JUPITER 6. SATURN 7. URANUS 8. N
Vexed Buzz quietly watched Neil jumping to mark the surface. Vexed Buzz

Proxima Vara Display Sample Summary (Named Styles)

PROXIMA VARA EXTRA CONDENSED THIN ITALIC

1957 SPUTNIK 1958 EXPLORER 1961 VOSTOK 1962 MERCURY 1964 RANGER 1965 GEMINI 1966 VENER
1. MERCURY 2. VENUS 3. EARTH 4. MARS 5. JUPITER 6. SATURN 7. URANUS 8. NEPTUNE 9. PLUTO? 1. MERC
Vexed Buzz quietly watched Neil jumping to mark the surface. Vexed Buzz quietly watched Neil w

PROXIMA VARA EXTRA CONDENSED EXTRALIGHT ITALIC

1957 SPUTNIK 1958 EXPLORER 1961 VOSTOK 1962 MERCURY 1964 RANGER 1965 GEMINI 1966 VEN
1. MERCURY 2. VENUS 3. EARTH 4. MARS 5. JUPITER 6. SATURN 7. URANUS 8. NEPTUNE 9. PLUTO? 1. ME
Vexed Buzz quietly watched Neil jumping to mark the surface. Vexed Buzz quietly watched Neil

PROXIMA VARA EXTRA CONDENSED LIGHT ITALIC

1957 SPUTNIK 1958 EXPLORER 1961 VOSTOK 1962 MERCURY 1964 RANGER 1965 GEMINI 1966 V
1. MERCURY 2. VENUS 3. EARTH 4. MARS 5. JUPITER 6. SATURN 7. URANUS 8. NEPTUNE 9. PLUTO? 1. M
Vexed Buzz quietly watched Neil jumping to mark the surface. Vexed Buzz quietly watched N

PROXIMA VARA EXTRA CONDENSED REGULAR ITALIC

1957 SPUTNIK 1958 EXPLORER 1961 VOSTOK 1962 MERCURY 1964 RANGER 1965 GEMINI 19
1. MERCURY 2. VENUS 3. EARTH 4. MARS 5. JUPITER 6. SATURN 7. URANUS 8. NEPTUNE 9. PLUTO?
Vexed Buzz quietly watched Neil jumping to mark the surface. Vexed Buzz quietly watche

PROXIMA VARA EXTRA CONDENSED MEDIUM ITALIC

1957 SPUTNIK 1958 EXPLORER 1961 VOSTOK 1962 MERCURY 1964 RANGER 1965 GEMINI
1. MERCURY 2. VENUS 3. EARTH 4. MARS 5. JUPITER 6. SATURN 7. URANUS 8. NEPTUNE 9. PLU
Vexed Buzz quietly watched Neil jumping to mark the surface. Vexed Buzz quietly wat

PROXIMA VARA EXTRA CONDENSED SEMIBOLD ITALIC

1957 SPUTNIK 1958 EXPLORER 1961 VOSTOK 1962 MERCURY 1964 RANGER 1965 GEM
1. MERCURY 2. VENUS 3. EARTH 4. MARS 5. JUPITER 6. SATURN 7. URANUS 8. NEPTUNE 9. P
Vexed Buzz quietly watched Neil jumping to mark the surface. Vexed Buzz quietly w

PROXIMA VARA EXTRA CONDENSED BOLD ITALIC

1957 SPUTNIK 1958 EXPLORER 1961 VOSTOK 1962 MERCURY 1964 RANGER 1965
1. MERCURY 2. VENUS 3. EARTH 4. MARS 5. JUPITER 6. SATURN 7. URANUS 8. NEPTUNE 9
Vexed Buzz quietly watched Neil jumping to mark the surface. Vexed Buzz quietly

PROXIMA VARA EXTRA CONDENSED EXTRABOLD ITALIC

1957 SPUTNIK 1958 EXPLORER 1961 VOSTOK 1962 MERCURY 1964 RANGER 19
1. MERCURY 2. VENUS 3. EARTH 4. MARS 5. JUPITER 6. SATURN 7. URANUS 8. NEPTU
Vexed Buzz quietly watched Neil jumping to mark the surface. Vexed Buzz qui

PROXIMA VARA EXTRA CONDENSED BLACK ITALIC

1957 SPUTNIK 1958 EXPLORER 1961 VOSTOK 1962 MERCURY 1964 RANGE
1. MERCURY 2. VENUS 3. EARTH 4. MARS 5. JUPITER 6. SATURN 7. URANUS 8. NE
Vexed Buzz quietly watched Neil jumping to mark the surface. Vexed Buzz

Proxima Vara Language Support, OpenType, & Variations Notes

LANGUAGES SUPPORTED

Afrikaans, Albanian, Asu, Azerbaijani, Basque, Belarusian, Bemba, Bena, Bosnian, Breton, Bulgarian, Catalan, Chechen, Chiga, Colognian, Cornish, Croatian, Czech, Danish, Dutch, Embu, English, Esperanto, Estonian, Faroese, Filipino, Finnish, French, Friulian, Galician, Ganda, German, Greek, Gusii, Hungarian, Icelandic, Inari Sami, Indonesian, Irish, Italian, Jola-Fonyi, Kabuverdianu, Kalaallisut, Kalenjin, Kamba, Kazakh, Kikuyu, Kinyarwanda, Koyra Chiini, Koyraboro Senni, Kyrgyz, Latvian, Lithuanian, Lower Sorbian, Luo, Luxembourgish, Luyia, Macedonian, Machame, Makhuwa-Meetto, Makonde, Malagasy, Malay, Maltese, Manx, Meru, Mongolian, Morisyen, North Ndebele, Northern Sami, Norwegian Bokmål, Norwegian Nynorsk, Nyankole, Oromo, Ossetic, Polish, Portuguese, Quechua, Romanian, Romansh, Rombo, Rundi, Russian, Rwa, Sakha, Samburu, Sango, Sangu, Scottish Gaelic, Sena, Serbian, Shambala, Shona, Slovak, Slovenian, Soga, Somali, Spanish, Swahili, Swedish, Swiss German, Taita, Tajik, Tasawaq, Teso, Turkish, Turkmen, Ukrainian, Upper Sorbian, Uzbek, Vietnamese, Vunjo, Walser, Welsh, Western Frisian, Zarma, Zulu

NOTE: Access to extended language features requires application and/or operating system Unicode or OpenType support.

OPENTYPE FEATURES SUPPORTED

Small Caps from Lowercase, All Small Caps, Standard Ligatures, Stylistic Alternates, Stylistic Sets (00-09), Case-Sensitive Forms, Class-Based Kerning, Proportional Lining Figures, Tabular Lining Figures, Proportional Oldstyle Figures, Tabular Oldstyle Figures, Slashed Zero, Fractions, Ordinals, Superscript, Scientific Inferior, Mark to Base, and Mark to Mark, Font Variations.

NOTE: Access to OpenType features requires application and/or operating system OpenType support.

ALTERNATE CHARACTER ACCESS

There are ten Stylistic Sets, providing access to alternate characters in Proxima Vara. In applications that support it, the name of the Stylistic Set is displayed (e.g., "Schoolbook Style"):

Set	Name	Roman	Italic
1	Schoolbook Style	a l y → a l y	<i>l y → l y</i>
2	Geometric Sans Style	G a → G a	<i>G → G</i>
3	Round G	G → G	<i>G → G</i>
4	One-story a	a → a	<i>a → a*</i>
5	Two-story a	a → a*	<i>a → a</i>
6	Curved l	l → l	<i>l → l</i>
7	Curved y	y → y	<i>y → y</i>
8	Primes from Straight Quotes	' " → ' "	<i>' " → ' "</i>
9	Seriffed One	1 → 1	<i>1 → 1</i>

* NO CHANGE

In programs that support Stylistic Sets, more than one Set may be applied at a time. For example, Stylistic Set 1 could be recreated by applying Sets 4, 6, and 7 all at once.

Note that Stylistic Sets 4 and 5 affect roman and italic differently. If you prefer a two-story lowercase "a" in italic as well as roman, apply Set 5. The roman "a" will keep its normal two-story design because Set 5 has no effect on the roman. Similarly, if you prefer to have a one-story "a" in both roman and italic, apply Set 4 instead, which changes the roman but not the italic.

FONT VARIATIONS

In apps and web browsers that support OpenType Font Variations (OTVar), you can specify arbitrary weight, width, or slant:

WEIGHT: 100–900 (100 = Thin, 900 = Black)

EE

WIDTH: 50–100 (50 = Extra Condensed, 100 = normal width)

EE

SLANT: 0–125 (0 = 0° upright, 125 = 12.5° italic)

EE

Any combination of these three characteristics may be specified, giving a total of 5,000,000 possible styles.

Note: The lowercase "a" changes to a one-story form ("a") when the slant value exceeds 50 (5°). You can override this using the "Two-story a" stylistic set (Set 5). Similarly, if you have applied the "One-story a" stylistic set (Set 4), the lowercase "a" will remain one-story, regardless of slant value.

Variations are usually controlled with sliders in desktop apps. For web use, values can be specified using CSS (Cascading Style Sheets).

In addition to these variable characteristics, there are 54 named styles which may be selected from font menus. In apps that don't yet have full support for arbitrary styles, you can still select any of these styles.

VARIABLE FONT SUPPORT

While all current web browsers support variable fonts, as of this writing (October 2020), support is uneven and sometimes missing in desktop apps. Adobe Creative Cloud apps (Illustrator, InDesign, and Photoshop) mostly support it, but there are still some bugs (e.g., variation sliders in InDesign don't always work correctly). Apple iWork apps (Pages, Keynote, and Numbers) have some support (named styles), again, with some bugs. Microsoft Office apps (Word, Excel, and Powerpoint) have no support for variable fonts yet, not even named styles, although it has been promised for an upcoming version.

For the latest information on which apps and web browsers support variable fonts, go to <https://v-fonts.com/support/>.